

**TRADE : FITTER-Sr.**

**MONTHLY TEST : WEEK NO. 29 TO 32**

DATE :

SEAT NO :

**TOTAL MARKS : 100 TIME : 2 Hrs. PAPER-I**

**TRADE CODE : 453**

**Note : Attempt all the questions. All questions carry equal marks**

**1. In this format detailed specifications about workmanship and properties of materials etc.**

- A) Estimation Record B) Maintenance Record  
 C) History Sheet D) Check List

**2. In which is a valve used a input data and it is derived from the best information available.**

- A) Estimation Record B) Check List  
 C) History Sheet D) Maintenance Record

**3. In which format is lubrication details mentioned ?**

- A) History Sheet  
 B) Job Card  
 C) Check List  
 D) All of the above

**4. In which format is machine size, weight and cost mentioned ?**

- A) History Sheet B) Check List  
 C) Job Card D) All of the above

**5. What is the unit of force in SI unit?**

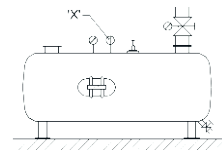
- A) Kilogram B) Newton  
 C) Dyne D) Pounds

**6. In which of the following formats the operator maintains the job record every hour**

- A) Job Card B) Work Activity Log  
 C) Batch production D) Estimate

**7. What is the name of part marked 'x' in compressor?**

- A) Relief valve  
 B) Thermometer  
 C) Shut-off valve  
 D) Pressure gauge



**8. Which gauge indicates pressure value above the atmospheric pressure?**

- A) Gauge Pressure B) Absolute Pressure  
 C) Atmospheric Pressure D) Vacuum Pressure

**9. Which formula is used to calculate the pressure?**

- A) Force + Area  
 B) Force/Area  
 C) Force - Area  
 D) Force x Area

**10. What is the unit of pressure in SI unit?**

- A) lb/in<sup>2</sup> B) N/m<sup>2</sup>  
 C) gram/ cm<sup>2</sup> D) kg/ m<sup>2</sup>

**11. What is the value of bar in metric unit of pressure?**

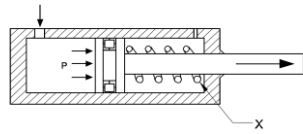
- A) 1 kg/ mm<sup>2</sup> B) 1 kg/ cm<sup>2</sup>  
 C) 1 kg/ m<sup>2</sup> D) 1 kg/ dm<sup>2</sup>

**12. In which of the following format are the entires taken according to the job processing steps ?**

- A) Estimate B) Work Activity Log  
 C) Batch production D) Job Card

13. What is the name of the part marked as 'X'?

- A) Cylinder
- B) Piston
- C) Spring
- D) Inlet port



14. In pneumatic system 'OR VALVE' is also named as -----.

- A) Check Valve
- B) Quick Exhaust Valve
- C) Flow control Valve
- D) Shuttle Valve

15. What is the name of the adjustable restrictors?

- A) Needle restrictor
- B) Longitudinal restrictor
- C) Gap restrictor
- D) Circumferential restrictor

16. Which term is used to move load with less efforts?

- A) Pneumatic
- B) Hydraulic
- C) Pressure
- D) Flow of Air

17. Which part of the single acting cylinder is attached with the load?

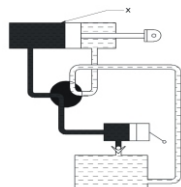
- A) Spring
- B) Seal
- C) Piston
- D) Piston Rod

18. Which energy is present in oil by virtue of its motion?

- A) Potential energy
- B) Kinetic energy
- C) Static energy
- D) Heat energy

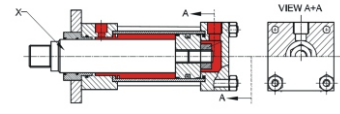
19. What is the name of the part marked 'X' in Hydraulic power System?

- A) Two piston valve
- B) Double acting cylinder
- C) Pump
- D) Reservoir



20. What is the name of the part marked 'X' in double acting cylinder?

- A) Guide ring
- B) Piston
- C) Lock nut
- D) Cylinder cap



21. Which device from the following changes the physical parameters to an electrical output ?

- A) Actuator
- B) Sensor
- C) Valve
- D) Pump

22. What is the science under that you study the properties and application of air?

- A) Hydraulic System
- B) Pneumatic System
- C) Electrical System
- D) Mechanical System

23. Which system is used liquid as transmitting fluid?

- A) Pneumatic system
- B) Hydraulic
- C) Electrical
- D) Mechanical

24. Which energy is converted by hydro static pressure of the oil?

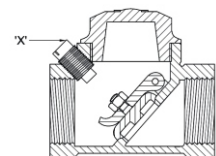
- A) Electrical energy
- B) Mechanical energy
- C) Pneumatic energy
- D) Hydraulic energy

25. Valve activation methods -----.

- A) Mechanical
- B) Electrical
- C) Pneumatic
- D) All the above

26. What is the name of the part marked as 'x' in non-return valve?

- A) Disc
- B) Stop plug
- C) Hinge pin
- D) Disc hinge nut



**27. Identify actuation mechanism in 5/2 way solenoid valve -----.**

- A) Push Button
- B) Selector Switch
- C) Spring
- D) None of the above

**28. The meaning of PLC is -----.**

- A) Process Logic Control
- B) Programmable Language control
- C) Programmable Logic Control
- D) Process Language Control

**29. Which type of filter helps to protect the pump from fluid contaminations?**

- A) Suction filter
- B) Magnetic filter
- C) Absorbent filter
- D) Mechanical filter

**30. High Viscosity Fluid -----.**

- A) Lower Power is consumed
- B) Low Pressure Drop
- C) Slow Movement
- D) All of the above

**31. All hydrostatic pumps works on the principle of -----.**

- A) Pascal's Law
- B) Boyle's Law
- C) Charle's Law
- D) None of these

**32. Which filter is used for high capacity ?**

- A) Line Filter
- B) Pre-Filter
- C) Fine Filter
- D) Off-Line Filter

**33. The meaning of PLC is -----.**

- A) Process Logic Control
- B) Programmable Language Control
- C) Programmable Logic Control
- D) Process Language Control

**34. ----- is actuatd by physical contact.**

- A) Reed Switch
- B) Limit Switch
- C) Inductive Switch
- D) Capacitive Switch

**35. Which part of double acting cylinder prevents air leakage from cylinder to atmosphere?**

- A) Piston seal
- B) Rod Seal
- C) Piston end
- D) Rod end

**36. Pump is delivering higher flow rate to valve, valve pressure drop will -----.**

- A) Increased
- B) Decreased
- C) Equal
- D) None of the above

**37. Which fire extinguisher should be ins-talled near hydraulic for safety ?**

- A) Dry Chemical
- B) Co<sub>2</sub>
- C) Dry Chemical or Co<sub>2</sub>
- D) None of the above

**38. By which medium, vanes or cam rings are rotated in vane pumps ?**

- A) By Motor
- B) By Rotor
- C) Electrically
- D) By Belt

**39. Which reservoir is used in aviation industry ?**

- A) Pressurised Reservoir
- B) Non- Pressurised Reservoir
- C) Both A and B
- D) None of Both A and B

**40. A cause of internal leakage in internal gear pump is -----.**

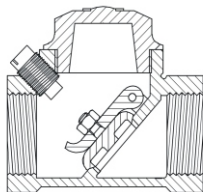
- A) Low Tolerance Level between Meshing Surface
- B) More Tolerance Level between Meshing Surface
- C) No Tolerance Between the Meshing Surface
- D) None of the above

**41. Which valves are used to control the direction of the flow of fluid?**

- A) Flow control valve
- B) Non - return valve
- C) Pressure control valve
- D) Directional control valve

**42. What is the name of the valve?**

- A) Flow control valve
- B) Ball type check valve
- C) Swing check valve
- D) Pressure type valve



**43. What is the operating voltage of electro pneumatics?**

- A) 10V - 140V      B) 12V - 220V
- C) 15V - 200V    D) 200V - 240V

**44. Which valve is used for fine control of flow in pipe line?**

- A) Gate valve      B) Globe valve
- C) Needle valve    D) Non - return valve

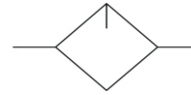
**45. Which law states that mass of gas is compressed or expanded at a constant temperature, then the absolute pressure is inversely proportional to the volume?**

- A) Pascal's Law
- B) Boyle's Law
- C) Archimedes Principle
- D) Hook's Law

**46. Which valve is used to permit fluid to flow in one direction and block the flow in opposite direction?**

- A) Globe valve      B) Check valve
- C) Shuttle valve    D) Pressure relief valve

**47. What is the name of the pneumatic symbol?**



- A) Filter              B) Lubricator
- C) Dryer             D) Pressure gauge

**48. Which type of valve connections are opened or closed by means of spool slide?**

- A) Check valve      B) Butterfly valve
- C) Solenoid valve    D) Non-return valve

**49. Vanes are pushed out from rotor slots by -----.**

- A) Friction Force      B) Centripetal Force
- C) Centrifugal Force    D) None of the above

**50. What is the name of the device used to remove dust, chips and other foreign particles from the fluid?**

- A) Pressure regulating valve
- B) Filter
- C) Accumulator
- D) Regulator

**SCAN ME**



[www.visionprakashan.com](http://www.visionprakashan.com)

**Month -08**

New Syllabus \_2022

**Sector : Capital Goods And Manufacturing**  
**Annual Pattern 2nd Year NSQF Level- 4**  
**INDUSTRIAL TRAINING INSTITUTE**

**8.1****TRADE : FITTER-Sr.****MONTHLY TEST : WEEK NO. 29 TO 32**DATE : **PAPER-I**TRADE CODE : **453****TOTAL MARKS : 100****ANSWER KEY****Note : Attempt all the questions. All questions carry equal marks**

Q.No.	ANS
1	<b>A</b>
2	<b>A</b>
3	<b>A</b>
4	<b>A</b>
5	<b>B</b>
6	<b>B</b>
7	<b>B</b>
8	<b>A</b>
9	<b>B</b>
10	<b>B</b>
11	<b>B</b>
12	<b>C</b>
13	<b>C</b>
14	<b>D</b>
15	<b>A</b>
16	<b>A</b>
17	<b>D</b>
18	<b>B</b>
19	<b>B</b>
20	<b>B</b>
21	<b>B</b>
22	<b>B</b>
23	<b>B</b>
24	<b>B</b>
25	<b>D</b>

Q.No.	ANS
26	<b>B</b>
27	<b>C</b>
28	<b>C</b>
29	<b>A</b>
30	<b>C</b>
31	<b>A</b>
32	<b>D</b>
33	<b>C</b>
34	<b>B</b>
35	<b>B</b>
36	<b>A</b>
37	<b>C</b>
38	<b>B</b>
39	<b>A</b>
40	<b>B</b>
41	<b>D</b>
42	<b>C</b>
43	<b>B</b>
44	<b>C</b>
45	<b>B</b>
46	<b>B</b>
47	<b>B</b>
48	<b>B</b>
49	<b>C</b>
50	<b>B</b>